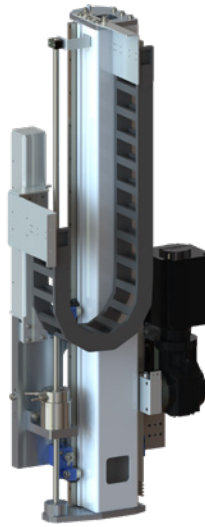


# SIZE 4

## LINEAR VERTICAL AXIS LVA-4



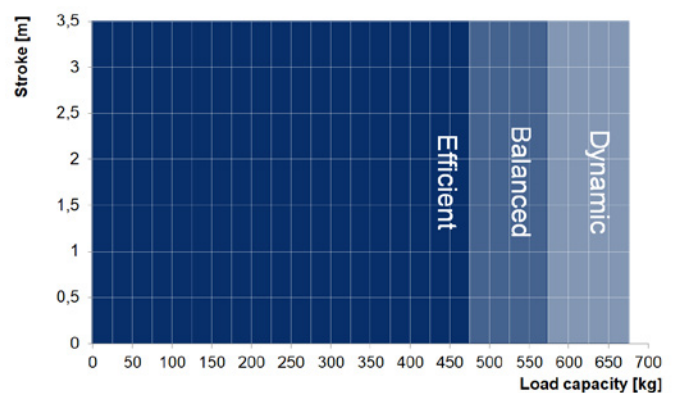
THE LVA-4 IS DESIGNED FOR HANDLING WEIGHTS OF UP TO 550 KG, MASTERS VERTICAL STROKES UP TO APPROX. 3.5 M AND REACHES A MOVEMENT SPEED OF UP TO 4.5 M/S WITH ACCELERATION OF UP TO 5 M/S<sup>2</sup>.

IT IS IDEAL AS A STATIONARY LIFTING DEVICE FOR WORKPIECES OR AS AN ADDITIONAL AXIS TO INCREASE FLEXIBILITY IN ASSEMBLY AND PRODUCTION.

THE RACK AND PINION SYSTEM ALLOWS THE TRANSMISSION OF LARGE FORCES AS WELL AS PRECISE POSITIONING.

### LOAD CLASSES

- **Dynamic** ( $v = 4.5 \text{ m/s}$ ,  $a = 5 \text{ m/s}^2$ )  
with additional load of up to 350 kg\*
- **Balanced** ( $v = 1.5 \text{ m/s}$ ,  $a = 3 \text{ m/s}^2$ )  
with additional load of up to 450 kg\*
- **Efficient** ( $v = 1 \text{ m/s}$ ,  $a = 2 \text{ m/s}^2$ )  
with additional load of up to 550 kg\*



\*Load specifications refer to a vertical stroke of 1.5 m.

### MORE INFORMATION?

Do you require more detailed information or a CAD model of our product? Then please get in touch with our sales team.

[vertrieb@fibro-laepfle.de](mailto:vertrieb@fibro-laepfle.de)